

HEAT EXCHANGER DESIGN

- 409 Stainless steel primary heat exchanger material
- AL29-4C Stainless steel secondary heat exchanger
- Weldless crimped S-curve primary heat exchanger design for maximum durability

BURNERS

- Aluminized steel in shot burners for smooth ignition
- Isolated burner enclosure for quiet operation

CABINET CONSTRUCTION

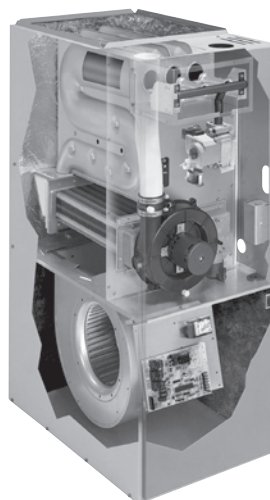
- Unitized construction for cabinet integrity
- Heat exchanger compartment and blower compartment insulated to increase efficiency and reduce sound levels
- Baked on prepainted steel cabinet finish

AIR DELIVERY SYSTEM

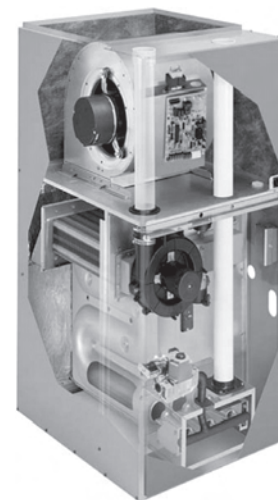
- ECM variable speed blower motor
- Motor features "soft start" and "soft stop" for quiet operation
- Active and passive dehumidification feature
- Easily removable slide-out blower design
- Dynamically balanced blower wheel with resilient motor mounts for smooth and quiet operation

CONTROLS

- Two stage gas valve
- Integrated ignition and fan control
- System Sentry™ control features five (5) fault codes for memory recall
- Hot surface ignition system uses high density mini ignitor with stainless steel shroud
- Control features electronic air cleaner and humidifier terminals
- Control circuit is fuse protected
- Color coded control wiring
- Compatible with single or two stage thermostats



Upflow/Horizontal



Counterflow



VENTING

- 2-speed induced draft motor with stainless steel shaft, steel ball bearings, and fan cooled for long life
- Vent materials for Canadian applications must comply with ULC S636
- Certified for direct and non-direct vent applications
- Internal condensate drain trap for upflow and counterflow installations
- External condensate drain kit factory provided for horizontal applications

INSTALLATION FEATURES

- Left or right gas and electric entry
- Laser cut base for easy removal of knockout for bottom return applications

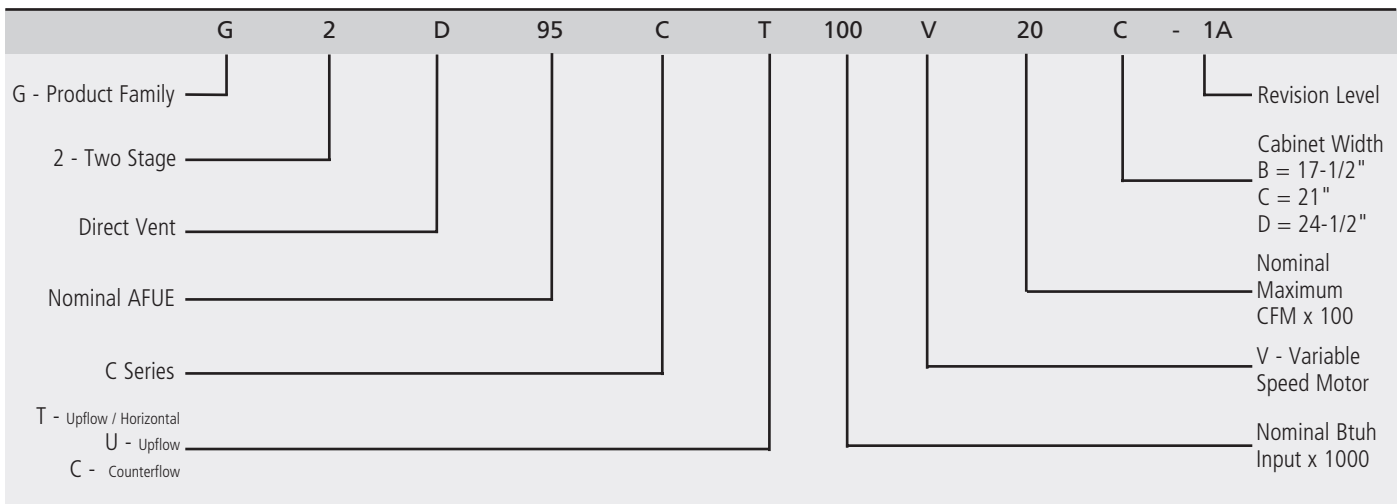
WARRANTY

- 10 year limited parts warranty / lifetime heat exchanger warranty available. See limited warranty document for details.



Built for life.Yours.

Model Number Guide



Physical and Electrical Data

| Model | 1st Stage | | 2nd Stage | | AFUE (ICUS) | Nom. Cooling Capacity | Gas Inlet (in.) | Volts/ Hz/ Phase | Min. Time Delay Breaker or Fuse | Nominal F.L.A. | Trans. (V.A.) | Approx. Weight (lbs.) |
|--------------------|-----------|--------|-----------|---------|-------------|-----------------------|-----------------|------------------|---------------------------------|----------------|---------------|-----------------------|
| | Input | Output | Input | Output | | | | | | | | |
| G2D95C(T,C)040V12B | 28,000 | 26,600 | 40,000 | 38,000 | 95.0% | 1.5 - 3.0 | 1/2 | 120/60/1 | 15 | 5.3 | 40 | 170 |
| G2D95C(T,C)060V14B | 42,000 | 39,900 | 60,000 | 57,000 | 95.0% | 1.5 - 3.5 | 1/2 | 120/60/1 | 15 | 5.3 | 40 | 195 |
| G2D95C(T,C)080V16C | 56,000 | 53,280 | 80,000 | 76,000 | 95.0% | 2.5 - 4.0 | 1/2 | 120/60/1 | 15 | 5.3 | 40 | 205 |
| G2D95C(T,C)080V20C | 56,000 | 53,280 | 80,000 | 76,000 | 95.0% | 3.5 - 5.0 | 1/2 | 120/60/1 | 15 | 6.8 | 40 | 210 |
| G2D95C(T,C)100V20 | 70,000 | 66,500 | 100,000 | 95,000 | 95.0% | 3.5 - 5.0 | 1/2 | 120/60/1 | 15 | 6.8 | 40 | 230 |
| G2D95C(T,C)125V20 | 87,500 | 82,250 | 125,000 | 117,500 | 94.0% | 3.5 - 5.0 | 1/2 | 120/60/1 | 15 | 6.8 | 40 | 230 |
| G2D95CU125V20D* | 87,500 | 82,250 | 125,000 | 117,500 | 94.0% | 3.5 - 5.0 | 1/2 | 120/60/1 | 15 | 6.8 | 40 | 235 |

* Available in Upflow only

Filter Requirement Data

| Airflow Descriptor | Disposable Filters | Cleanable Filters |
|--------------------|------------------------|-----------------------|
| | Minimum Area (sq. in.) | Minimum Area (sq.in.) |
| 12 | 576 | 288 |
| 14 | 672 | 336 |
| 16 | 768 | 384 |
| 20 | 960 | 480 |

1. The Airflow Descriptor is the two digits following the "V" in the model number; e.g. "20" is the Airflow Descriptor for G2D95C(T,C)080V20C.

2. Areas shown for permanent filters are based on filters rated at 600 feet per minute face velocity.

Accessories

| Kit Number | Description | Used with |
|------------|---|------------------------|
| ABASE512 | Combustible Floor Base for 17.5 inch wide units | All Counterflow Models |
| ABASE568 | Combustible Floor Base for 21 inch wide units | All Counterflow Models |
| ABASE569 | Combustible Floor Base for 24.5 inch wide units | All Counterflow Models |
| ALPKT583-1 | Propane Conversion Kit | All Two-Stage Models |
| ACVK2-1 | Concentric Vent Kit | All Models |
| AFUSE576 | Fuse Kit | All Models |
| AMB20A-2 | Filter Kit | All Upflow Models |

Blower Performance Data

| Direction | Model | Motor Size (hp) | Blower Size | Temp Rise (°F) | Blower Speed Tap | Low Fire | High Fire | Cooling Adjust-ment | Cooling CFM @ .50 in W.C. ext. static pressure | | | |
|----------------------------------|--------------------|-----------------|-------------|----------------|-------------------|----------|-----------|---------------------|--|-------------|-------------|-------------|
| | | | | | | | | | Setting "A" | Setting "B" | Setting "C" | Setting "D" |
| Upflow / Horizontal, Counterflow | G2D95C(T,C)040V12B | 1/2 | 10 x 8 | 40 - 50 | --- | --- | --- | Nom. | 1185 | 980 | 775 | 565 |
| | | | | | --- | --- | --- | (+) | 1350 | 1125 | 905 | 670 |
| | | | | | --- | --- | --- | (-) | 1005 | 815 | 655 | 500 |
| | | | | | A Tap Setting* | 575 | 865 | --- | --- | --- | --- | --- |
| | G2D95C(T,C)060V14B | 1/2 | 10 x 8 | 50 - 60 | --- | | | Nom. | 1405 | 1235 | 1040 | 815 |
| | | | | | --- | | | (+) | 1615 | 1410 | 1185 | 960 |
| | | | | | --- | | | (-) | 1230 | 1055 | 870 | 690 |
| | | | | | A Tap Setting* | 650 | 1020 | --- | --- | --- | --- | --- |
| | G2D95C(T,C)080V16C | 3/4 | 12 x 10 | 50 - 60 | --- | | | Nom. | 1600 | 1415 | 1215 | 1005 |
| | | | | | --- | | | (+) | 1850 | 1610 | 1395 | 1150 |
| | | | | | --- | | | (-) | 1360 | 1190 | 1020 | 890 |
| | | | | | A Tap Setting* | 950 | 1490 | --- | --- | --- | --- | --- |
| | G2D95C(T,C)080V20 | 1 | 12 x 10 | 50 - 60 | --- | --- | --- | Nom. | 1985 | 1780 | 1590 | 1330 |
| | | | | | --- | --- | --- | (+) | 2180 | 2045 | 1785 | 1590 |
| | | | | | --- | --- | --- | (-) | 1690 | 1495 | 1305 | 1105 |
| | | | | | C, D Tap Setting* | 950 | 1385 | --- | --- | --- | --- | --- |
| Upflow / Horizontal | G2D95CT100V20C | 1 | 12 x 10 | 50 - 60 | --- | --- | --- | Nom. | 1935 | 1765 | 1560 | 1355 |
| | | | | | --- | --- | --- | (+) | 2210 | 1985 | 1790 | 1560 |
| | | | | | --- | --- | --- | (-) | 1645 | 1485 | 1315 | 1170 |
| | | | | | B Tap Setting* | 1105 | 1630 | --- | --- | --- | --- | --- |
| | G2D95CT125V20C | 1 | 12 x 10 | 50 - 60 | --- | --- | --- | Nom. | 1935 | 1765 | 1560 | 1355 |
| | | | | | --- | --- | --- | (+) | 2210 | 1985 | 1790 | 1560 |
| | | | | | --- | --- | --- | (-) | 1645 | 1485 | 1315 | 1170 |
| | | | | | A Tap Setting* | 1450 | 2115 | --- | --- | --- | --- | --- |
| Upflow only | G2D95CU125V20D** | 1 | 12 x 10 | 50 - 60 | --- | --- | --- | Nom. | 2045 | 1840 | 1630 | 1400 |
| | | | | | --- | --- | --- | (+) | 2280 | 2100 | 1860 | 1595 |
| | | | | | --- | --- | --- | (-) | 1735 | 1570 | 1355 | 1190 |
| | | | | | A Tap Setting* | 1450 | 2115 | --- | --- | --- | --- | --- |
| Counterflow | G2D95CC100V20D | 1 | 12 x 10 | 50-60 | --- | --- | --- | Nom. | 1890 | 1705 | 1490 | 1270 |
| | | | | | --- | --- | --- | (+) | 2205 | 1970 | 1745 | 1495 |
| | | | | | --- | --- | --- | (-) | 1600 | 1410 | 1225 | 1080 |
| | | | | | B Tap Setting* | 1105 | 1630 | --- | --- | --- | --- | --- |
| | G2D95CC125V20D | 1 | 12 x 10 | 50-60 | --- | --- | --- | Nom. | 1890 | 1705 | 1490 | 1270 |
| | | | | | --- | --- | --- | (+) | 2205 | 1970 | 1745 | 1495 |
| | | | | | --- | --- | --- | (-) | 1600 | 1410 | 1225 | 1080 |
| | | | | | A Tap Setting* | 1450 | 2115 | --- | --- | --- | --- | --- |

* Speed tap for temperature rise within rise range. ** Available in upflow only

Vent Length Specifications - Maximum

| Model | Pipe Size (in.) | | |
|----------------|-----------------|-------|------|
| | 2 | 2-1/2 | 3 |
| G2D95C(T,C)040 | 60ft | 90ft | 90ft |
| G2D95C(T,C)060 | 60ft | 90ft | 90ft |
| G2D95C(T,C)080 | 40ft | 60ft | 90ft |
| G2D95C(T,C)100 | 40ft | 60ft | 90ft |
| G2D95C(T,C)125 | NR | 50ft | 60ft |
| *G2D95CU125 | NR | 50ft | 60ft |

One 90° elbow equals 5 ft. of pipe.

Minimum length 5 ft. and 1 elbow not including the vent and air intake terminals.

* Available in upflow only

3" diameter recommended for altitudes above 5000 ft.

Clearances (in.) Upflow

| Model | Top | Right Side | Left Side | Front | Back | Vent |
|-----------------|-----|------------|-----------|-------|------|------|
| G2D95CT040V12B | 1 | 0 | 0 | 2 | 0 | 0 |
| G2D95CT060V12B | | | | | | |
| G2D95CT080V16C | | | | | | |
| G2D95CT080V20C | | | | | | |
| G2D95CT100V20 | | | | | | |
| G2D95CT125V20 | | | | | | |
| G2D95CU125V20D* | | | | | | |

* Available in upflow only

Clearances (in.) Horizontal

| Model | Top | Right Side | Left Side | Front | Back | Vent |
|----------------|-----|------------|-----------|-------|------|------|
| G2D95CT040V12B | 0 | 0 | 0 | 18 | 0 | 0 |
| G2D95CT060V12B | | | | | | |
| G2D95CT080V16C | | | | | | |
| G2D95CT080V20C | | | | | | |
| G2D95CT100V20C | | | | | | |
| G2D95CT125V20C | | | | | | |

Clearances (in.) Counterflow

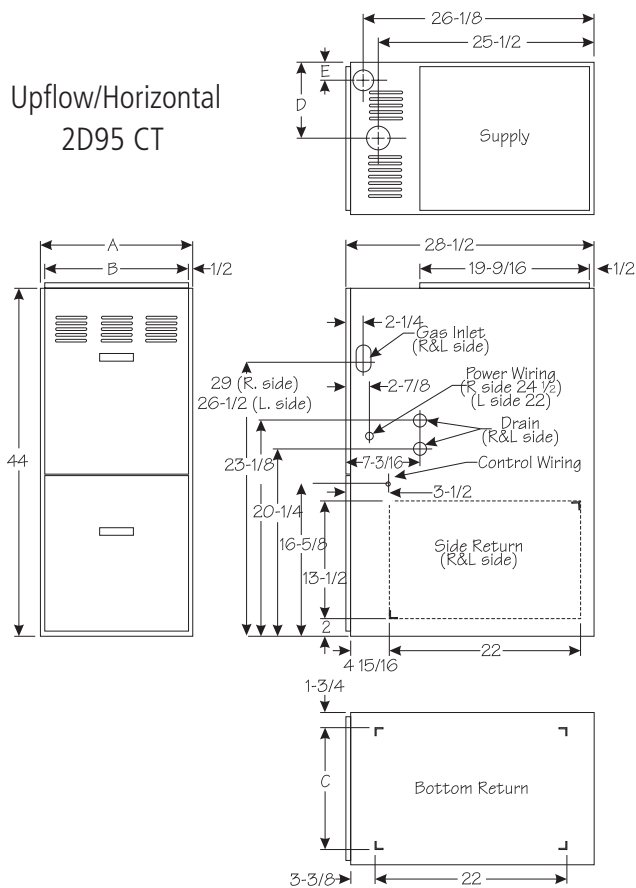
| Model | Top | Side | Front | Back | Vent |
|----------------|-----|------|-------|------|------|
| G2D95CC040V12B | 1 | 0 | 2 | 0 | 0 |
| G2D95CC060V14B | | | | | |
| G2D95CC080V16C | | | | | |
| G2D95CC080V20D | | | | | |
| G2D95CC100V20D | | | | | |
| G2D95CC125V20D | | | | | |

Dimensions (in.)

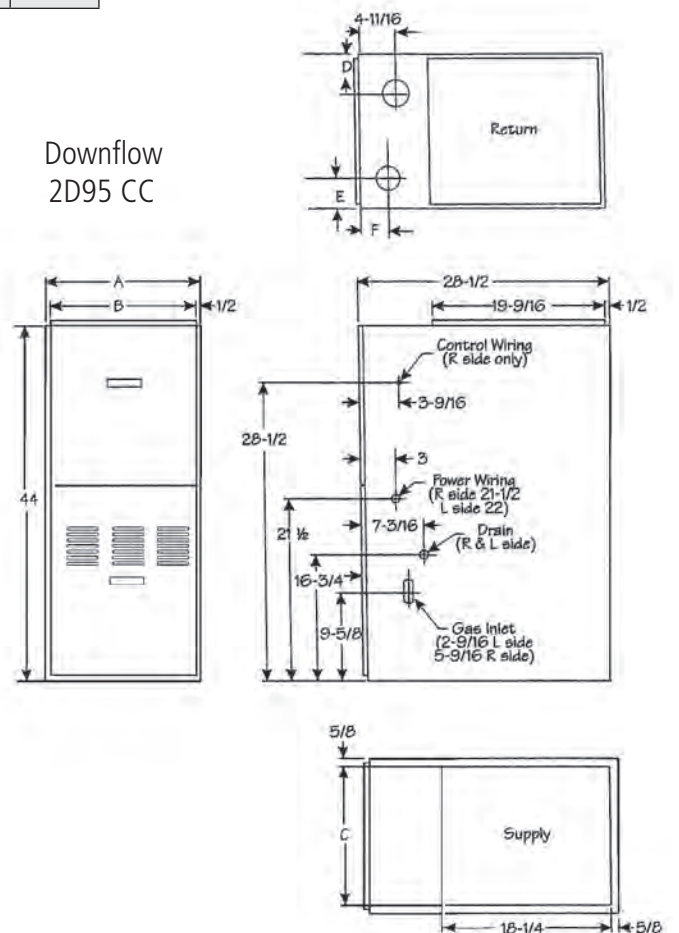
| Direction | Model | A | B | C | D | E | F |
|-----------------------------------|--------------------|--------|--------|--------|--------|-------|-------|
| Upflow/Horizontal, Counterflow | G2D95C(T,C)040V12B | 17-1/2 | 16-1/2 | 14 | 10-1/8 | 2 | -- |
| | G2D95C(T,C)060V14B | 17-1/2 | 16-1/2 | 14 | 11-3/4 | 2 | -- |
| | G2D95C(T,C)080V16C | 21 | 20 | 17-1/2 | 15 | 2 | -- |
| | G2D95C(T,C)080V20C | | | | | | |
| Upflow, Horizontal | G2D95CT100V20C | 21 | 20 | 17-1/2 | 16-1/2 | 1-1/2 | -- |
| | G2D95CT125V20C | | | | | | |
| Upflow only | G2D95CU125V20D* | 24-1/2 | 23-1/2 | 21 | 18 | 2 | -- |
| Counterflow | G2D95CC100V20D | 24-1/2 | 23-1/2 | 23-1/4 | 4-2/3 | 6-3/8 | 3-1/3 |
| | G2D95CC125V20D | | | | | | |

* Available in upflow only

Upflow/Horizontal
2D95 CT



Downflow
2D95 CC





Built for life. Yours.

www.airease.com
1-800-448-5872

All specifications and illustrations
subject to change without notice
and without incurring obligations.