

Enhanced Oil Furnace Upflow

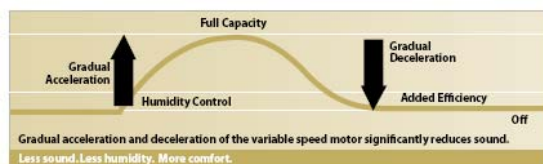
Variable Speed Oil Furnace LUF80V



Limited lifetime warranty on
heat exchanger
5 year limited warranty
on all parts
Extended warranties available



VARIABLE BLOWER SPEED OPERATION



With the ability to start gradually and run at a reduced speed, the variable speed fan motor allows air to flow evenly and consistently throughout the home. This ensures greater energy efficiency and helps maintain an even temperature in all rooms – regardless of location.

HEAT EXCHANGER

- Heavy duty 14 gauge steel for long life and quiet operation
- Dense ceramic combustion chamber for clean, even combustion and quiet operation
- Easy access large diameter stainless steel clean out ports for years of easy cleaning access

CABINET

- Foil-faced high density fiberglass insulation reduces both heat loss and sound
- Polyester painted steel for maximum durability and corrosion resistance
- Cleanable external filter and rack provided

BLOWER

- ECM variable speed motor for the ultimate in efficiency and flexibility
- Slow quiet blower ramp-up and blower ramp-down
- Automatically adjusts airflow to compensate for the installation and environment
- Continuous fan is at 50% of cooling CFM providing quiet comfortable air movement and even temperatures throughout the home
- Indoor Air Quality add-ons can be run year round for a fraction of the cost of a traditional PSC motor
- When used with central cooling system will increase the system's performance while helping the cooling system better control humidity

BURNER

- High quality Beckett Flame Retention burner for efficient combustion
- High efficiency PSC burner motor to provide consistent operation through all operating conditions
- Solid state ignition provides a consistent 10,000 volts for clean smooth combustion

CONTROLS

- Honeywell 7184B primary control with 15 second pre-purge to help maintain clean combustion. Also provides LED diagnostics, limited reset and interrupted ignition
- Color coded wires for easy installation and service
- 24 volt, 40 VA transformer and controls for easy add-on cooling
- Field adjustable cooling CFM to match the application
- Control board provides diagnostics

VENTING

- Includes standard barometric damper
- Optional sidewall vent kit

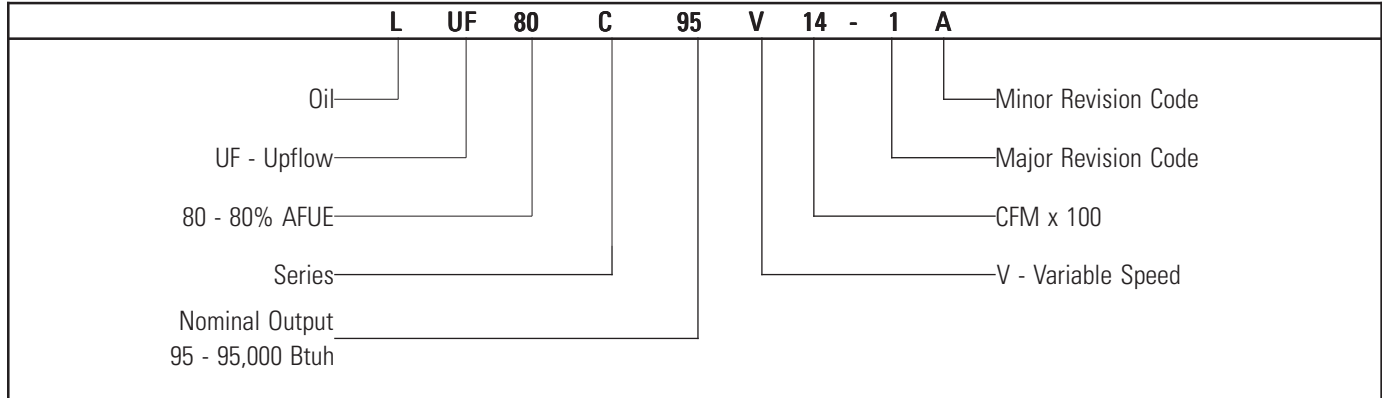
ACCESSORIES

- Coil cabinet
- Cleanout brush kit
- Side return air cabinet
- External filter kit for single side entry and over 1600 CFM
- Combustion Air Kit - provides a means to bring combustion air from outside directly to burner (ABOOT571)

AIREASE

Built for life. Yours.

Model Number Guide



Physical and Electrical

Model	Nozzle Size	Input (Btuh)	Output (Btuh)	AFUE (ICS)	Nom. Cooling Capacity	Flue Dia. (in.)	Filter Size (in.)	Volts/ Hz/Phase	Max. Time Delay Breaker or Fuse (amp)	Trans. (V.A.)	Weight (lb.)
LUF80C57/72V12	.50GPH-80°A	70,000	58,000	83	1.5 - 3.0	6	16 x 25	120/60/1	15	40	225
	.65GPH-80°B	90,000	74,000								
LUF80C84/95V14	.65GPH-80°B	105,000	85,000	81	2.0 - 3.5	6	16 x 25	120/60/1	15	40	225
	.75GPH-80°B	119,000	97,000								
LUF80C112/125V20	.85GPH-80°B	140,000	113,000	81	3.0 - 5.0	6	(2) 16 X 25 ¹	120/60/1	15	40	275
	1.00GPH-80°B	154,000	125,000								

¹Requires return air be brought to both sides above 1600 CFM

NOTE: Units shipped with filter(s) for side return

NOTE: All models are rated at 140 psi pump pressure except the LUF80C57/72 which is rated at 100 psi

Accessories

Description	Used with	Kit Number
Clean Out Kit	All models	ABRSH380-3
Tjerlund Side Wall Vent Kit ¹	All models	ASVNT522
Field Controls Side Wall Vent Kit ²	All models	ASVNT523
Evaporator Coil Cabinet	LUF57/72/84/95 with 15 1/2" - 17 1/2" wide coil	AAOILKDCC19
Evaporator Coil Cabinet	LUF84/95 with 21" wide coil	AAOILKDCC22
Evaporator Coil Cabinet	LUF112/125 with 21"-23" wide coil	AAOILKDCC27
External Filter Rack	All LUF models.	AFILTHA7-2
Side Return Air Cabinet	LUF57/84/95	ARCABHA-8
Side Return Air Cabinet	LUF112/125	ARCABHA-9
Combustion Air Kit	All models	ABOOT571
Clean Out Cap Kit	All models	ACAP570

¹ This can be ordered from Tjerlund, part number SSII.

² This can be ordered from Field Controls, part number SWG-5-CK61.

Blower

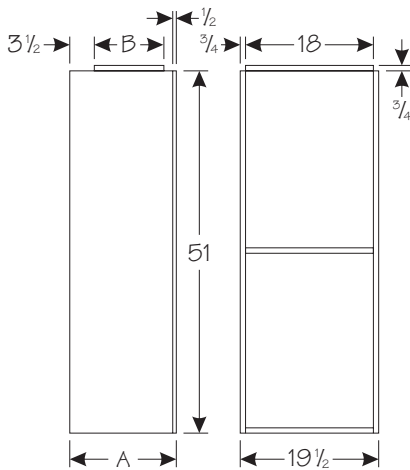
Model	Motor Size	Blower Size	Temp. Rise °F	Blower Speed Tap		Cooling Adjustment	Cooling CFM @ .50 ext. static pressure in. W.C.			
				Heating CFM @ .50 static			Setting "A"	Setting "B"	Setting "C"	Setting "D"
LUF57-72V12	1/2 hp	10 x 8	--	--	--	Nom	1200	1000	800	600
				--	--	(+)	1350	1200	1000	700
				--	--	(-)	1050	850	700	540
LUF57V12	1/2 hp	10 x 8	60	D Tap Setting*	750	--	--	--	--	
LUF72V12	1/2 hp	10 x 8	60	C Tap Setting*	1000	--	--	--	--	
LUF84-95V14	1/2 hp	10 x 10	--	--	--	Nom	1400	1200	1000	800
				--	--	(+)	1500	1400	1200	1000
				--	--	(-)	1200	1000	900	650
LUF84V14	1/2 hp	10 x 10	60	D Tap Setting*	1200	--	--	--	--	
LUF95V14	1/2 hp	10 x 10	60	C Tap Setting*	1300	--	--	--	--	
LUF112-125V20	3/4 hp	12 x 11	--	--	--	Nom	2000	1800	1600	1200
				--	--	(+)	2000	2000	1800	1600
				--	--	(-)	1700	1550	1400	1200
LUF112V20	3/4 hp	12 x 11	60	D Tap Setting*	1400	--	--	--	--	
LUF125V20	3/4 hp	12 x 11	60	B Tap Setting*	1730	--	--	--	--	

NOTE: All units shipped with low fire nozzle.
 *Required tap to maintain recommended rise.

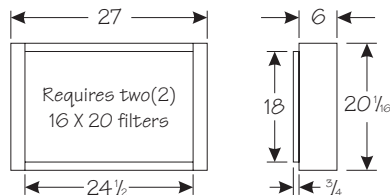
Accessories Dimensions (in.)

Side Return Air Cabinet

Model	A	B
ARCABHA-8	15	10
ARCABHA-9	21	16

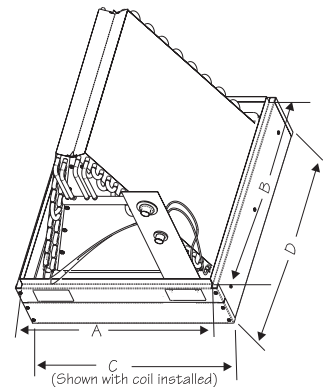


External Filter Rack



Evaporator Coil Cabinet

Model	Plenum		Cabinet	
	A	B	C	D
AAOILKDCC19	18 1/2	21 1/8	19 1/2	22 1/8
AAOILKDCC22	21 1/2	22 1/4	22 1/2	23 1/4
AAOILKDCC24	23	23 1/4	24	24 1/4
AAOILKDCC26	25	24 5/8	26	25 5/8
AAOILKDCC27	25	24 1/4	26	25 5/8



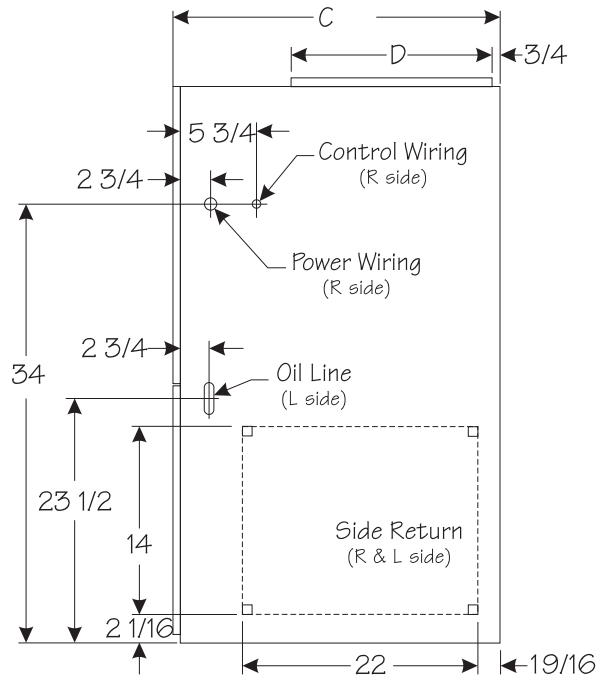
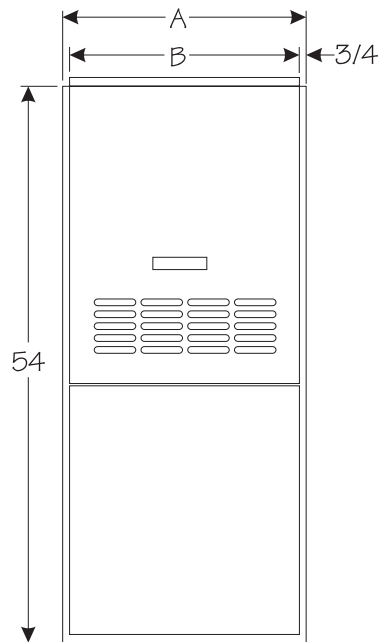
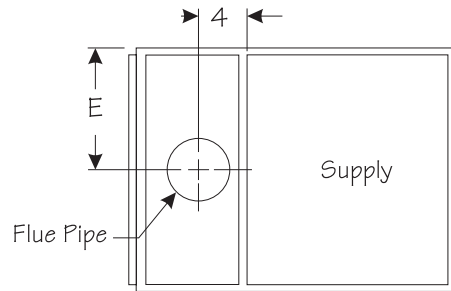
Dimensions (in.)

Model	A	B	C	D	E
LUF80C57/72	19 1/2	18	30 5/8	19 5/8	9 3/4
LUF80C84/95					
LUF80C112/125	22 1/2	21	33 1/8	22 1/8	11 1/4

Clearances (in.)

Model	Front*	Sides	Rear
LUF80C57/72	4	0	0
LUF80C84/95			
LUF80C112/125			

*For service requirements normally 24".



AIREASE

421 Monroe Street • Bellevue, OH 44811
 (419) 483-4840
 www.airease.com

